



# Remote Test Data Management Platform



Remote Test Data Platform is designed to collect test data from vehicle in the field. This platform enables to store, analyze and monitor data collected from telematics devices installed in vehicles. Data is collected to either local servers or cloud. Effectively analyzing real-time data facilitates data-driven decision-making operations. Industry-specific reporting formats can be developed.



Test Configuration



Vehicle Configuration



Vehicle Tracking



# How Does It Work?



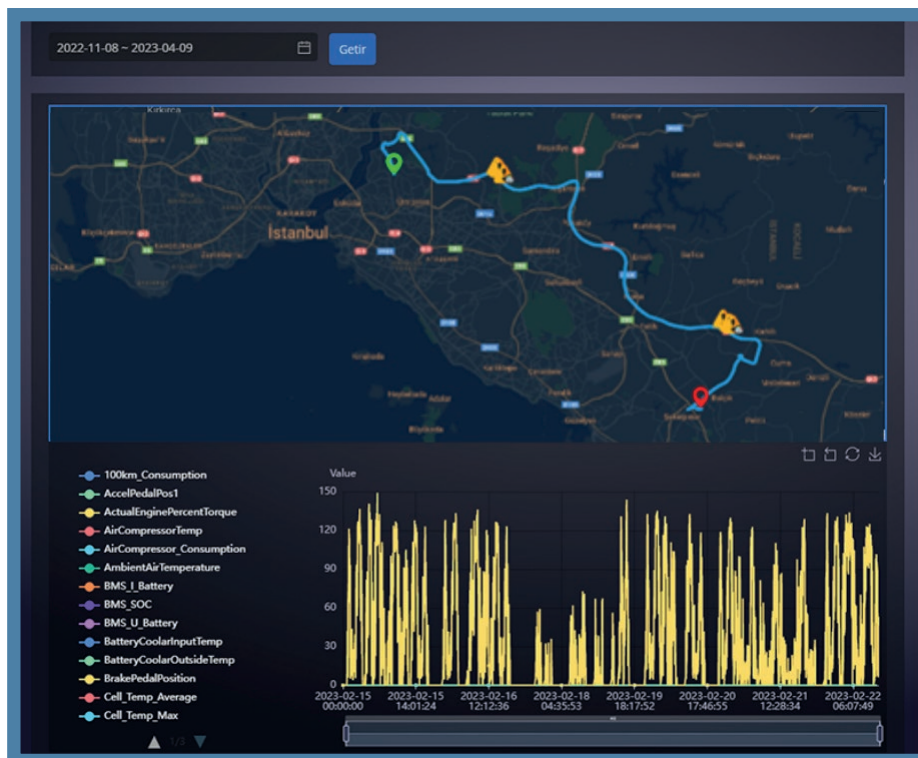
Vehicle CAN-Bus and sensor data are collected and transferred to the cloud or local servers.



The collected data is made available on the “Remote Test Data Platform”.



Real-Time monitoring, analysis and reporting on the platform.



- Remote data storage in addition to in vehicle data storage.
- Manage test data from many vehicles in remote testing.
- Real-time monitoring and analysis help to achieve shorter and more effective testing.
- Test engineers can verify remotely the successful collection of from vehicle.

